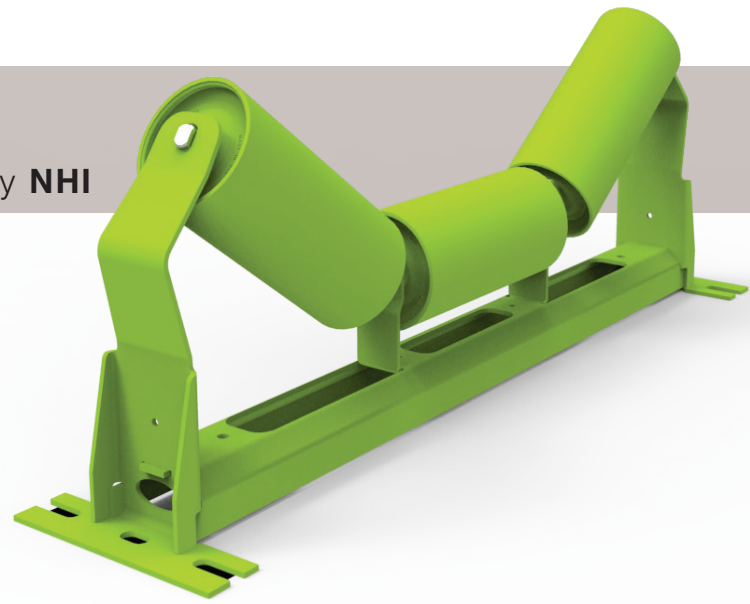




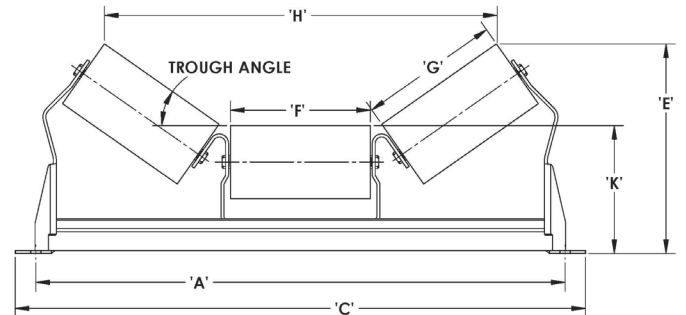
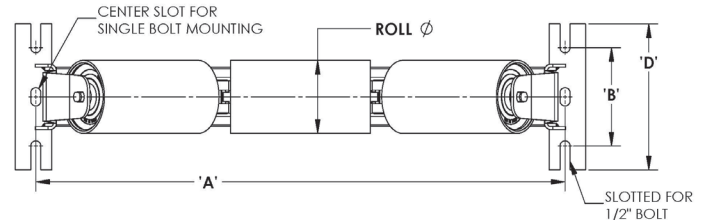
CONVEYOR
PRODUCTS® by NHI



MANTIS Troughing Assemblies

All CEMA B Trough Assemblies use NHI's proprietary three piece formed sheet steel frames. These frames are engineered to minimize material usage and overall weight while also providing defined openings for spillover and other debris to pass through the frame and away from the rollers, thereby reducing the need for routine cleanup and extending the life of the idlers.

- Lighter weight and engineered for long life.
- Streamlined 3-piece design with fewer welds; provides far greater durability.
- Engineered for better belt alignment, less spillover.
- Center-section Spillover Passages stamped out of frame to create risers without any weak-point welds.
- Spillover Passages allow debris to fall through frame; won't build up on base like competitors' frames.
- Less weight means lower shipping costs, less stress on your underlying structure.
- Equipped with NHI's patented idlers.



Trough Part Numbering

XX-XXXX-XX

CEMA Series
B, C

Roll Diameter
B - 4, 5; C - 4, 5, 6

Troughing Angle
20°, 35°

Belt Width
B - 14 to 36"
C - 18 to 60"

Frame Configuration
TE - Equal Length
Troughing

Require engineering support? Contact us with your ideas, plans or specs.

800.654.1090
sales@mantis-mfg.com

mantis-mfg.com

MANTIS CEMA B Trough Assembly

20° Equal Length Trough Assembly — 4" Roll Diameter

Belt Width	Part No.	A	B	C	D	E	F	G	H	K	Wt (lb)
14	B4-20TE-14	23	6	25-1/4	8	9-1/8	5	6	17-7/8	7	25
16	B4-20TE-16	25	6	27-1/4	8	9-1/8	6	6	18-7/8	7	26
18	B4-20TE-18	27	6	29-1/4	8	9-1/2	7	7	21-3/4	7	28
20	B4-20TE-20	29	6	31-1/4	8	9-3/4	7-5/8	7-5/8	23-5/8	7	30
24	B4-20TE-24	33	6	35-1/4	8	10-1/4	9	9	27-1/2	7	33
30	B4-20TE-30	39	6	41-1/4	8	10-7/8	11	11	33-1/4	7	37
36	B4-20TE-36	45	6	47-1/4	8	11-1/2	13	13	40	7	42

35° Equal Length Trough Assembly — 4" Roll Diameter

Belt Width	Part No.	A	B	C	D	E	F	G	H	K	Wt (lb)
14	B4-35TE-14	23	6	25-1/4	8	10-1/2	5	6	16-1/8	7	26
16	B4-35TE-16	25	6	27-1/4	8	10-1/2	6	6	17-1/8	7	27
18	B4-35TE-18	27	6	29-1/4	8	11-1/8	7	7	19-7/8	7	29
20	B4-35TE-20	29	6	31-1/4	8	11-1/2	7-5/8	7-5/8	21-1/2	7	30
24	B4-35TE-24	33	6	35-1/4	8	12-1/4	9	9	25	7	34
30	B4-35TE-30	39	6	41-1/4	8	13-3/8	11	11	30-3/8	7	38
36	B4-35TE-36	45	6	47-1/4	8	14-1/2	13	13	35-5/8	7	43

20° Equal Length Trough Assembly — 5" Roll Diameter

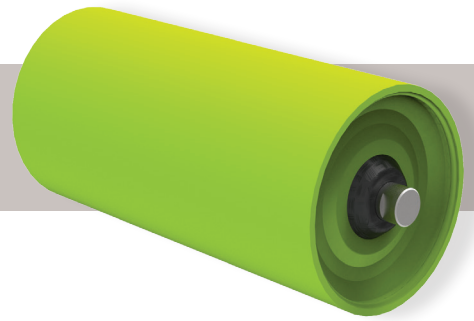
Belt Width	Part No.	A	B	C	D	E	F	G	H	K	Wt (lb)
14	B5-20TE-14	23	6	25-1/4	8	9-5/8	5	6	17-1/2	7-1/2	29
16	B5-20TE-16	25	6	27-1/4	8	9-5/8	6	6	18-1/2	7-1/2	30
18	B5-20TE-18	27	6	29-1/4	8	10	7	7	21-1/2	7-1/2	33
20	B5-20TE-20	29	6	31-1/4	8	10-1/4	7-5/8	7-5/8	23-3/8	7-1/2	34
24	B5-20TE-24	33	6	35-1/4	8	10-5/8	9	9	27-1/8	7-1/2	38
30	B5-20TE-30	39	6	41-1/4	8	11-3/8	11	11	33	7-1/2	43
36	B5-20TE-36	45	6	47-1/4	8	12	13	13	38-5/8	7-1/2	48

35° Equal Length Trough Assembly — 5" Roll Diameter

Belt Width	Part No.	A	B	C	D	E	F	G	H	K	Wt (lb)
14	B5-35TE-14	23	6	25-1/4	8	11	5	6	15-1/2	7-1/2	30
16	B5-35TE-16	25	6	27-1/4	8	11	6	6	16-1/2	7-1/2	31
18	B5-35TE-18	27	6	29-1/4	8	11-1/2	7	7	19-1/4	7-1/2	33
20	B5-35TE-20	29	6	31-1/4	8	12	7-5/8	7-5/8	21	7-1/2	35
24	B5-35TE-24	33	6	35-1/4	8	12-3/4	9	9	24-1/2	7-1/2	39
30	B5-35TE-30	39	6	41-1/4	8	13-7/8	11	11	29-3/4	7-1/2	44
36	B5-35TE-36	45	6	47-1/4	8	15	13	13	35	7-1/2	50



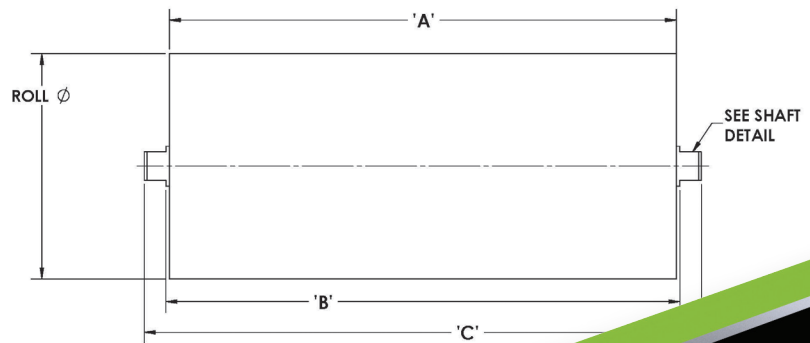
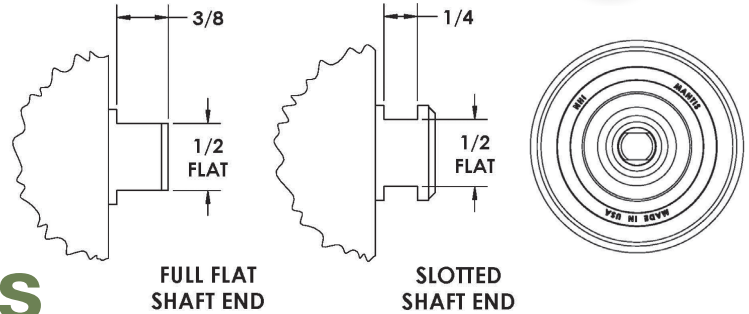
CONVEYOR PRODUCTS® by NHI



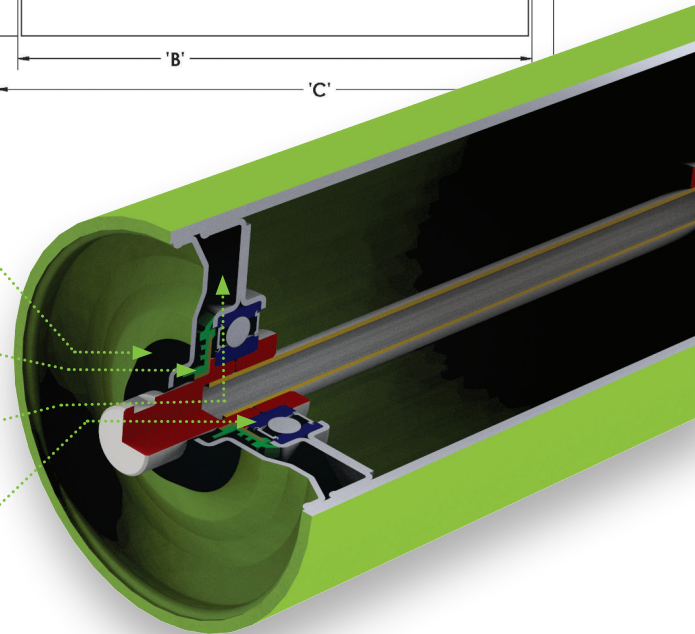
CEMA B Replacement Idlers

Idlers are equipped with 6204 series Ball Bearings, larger than the industry standard 6203, for increased load capacity and extended life. These larger bearings are sealed with NHI's proprietary 6204 Defender® Triple Lip Seals for enhanced contamination resistance and grease retention.

- Patented design.
- Internal edge weld—no contact with conveyor belt.
- Four layers of protection from contaminants that cause other idlers to break down.



1. **External Nylon Labyrinth Seal** on end cap reduces possible intrusion area by up to 65% versus competitors' idlers.
2. **Secondary Internal Labyrinth Seal** with contact lip prevents contaminants from reaching bearings.
3. **Chamber Lock Technology** creates a separate holding area for contaminants, should any penetrate the first two layers of protection.
4. **Proprietary Defender® Bearings** sized larger than industry standard, for improved capacity and extended life. These bearings feature a proprietary seal design for superior contaminant resistance and grease retention.



Replacement Part Numbering **XX-XX-XX-X**



Require engineering support? Contact us with your ideas, plans or specs.

800.654.1090
sales@mantis-mfg.com

mantis-mfg.com

MANTIS CEMA B Replacement Idlers

CEMA B 4" Replacement Roll, Full Flats

Belt Width	Part No.	A	B	C	Wt (lb)
14	B4-TE-14	5	5-1/8	5-15/16	4.6
16	B4-TE-16	6	6-1/8	6-15/16	5.0
18	B4-TE-18	7	7-1/8	7-15/16	5.5
20	B4-TE-20	7-11/16	7-13/16	8-5/8	5.8
24	B4-TE-24	9	9-1/8	9-15/16	6.4
30	B4-TE-30	11	11-1/8	11-15/16	7.3
36	B4-TE-36	13	13-1/8	13-15/16	8.2

CEMA B 4" Replacement Roll, Slotted Ends

Belt Width	Part No.	A	B	C	Wt (lb)
14	B4-TE-14-S	5	5-1/8	5-15/16	4.6
16	B4-TE-16-S	6	6-1/8	6-15/16	5.0
18	B4-TE-18-S	7	7-1/8	7-15/16	5.5
20	B4-TE-20-S	7-11/16	7-13/16	8-5/8	5.8
24	B4-TE-24-S	9	9-1/8	9-15/16	6.4
30	B4-TE-30-S	11	11-1/8	11-15/16	7.3
36	B4-TE-36-S	13	13-1/8	13-15/16	8.2

CEMA B 5" Replacement Roll, Full Flats

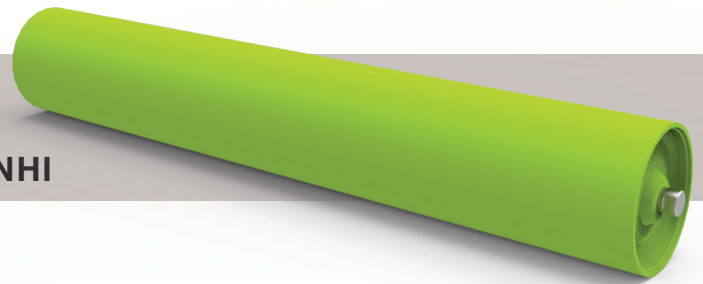
Belt Width	Part No.	A	B	C	Wt (lb)
14	B5-TE-14	5	5-1/8	5-15/16	5.8
16	B5-TE-16	6	6-1/8	6-15/16	6.3
18	B5-TE-18	7	7-1/8	7-15/16	6.9
20	B5-TE-20	7-11/16	7-13/16	8-5/8	7.3
24	B5-TE-24	9	9-1/8	9-15/16	8.0
30	B5-TE-30	11	11-1/8	11-15/16	9.2
36	B5-TE-36	13	13-1/8	13-15/16	10.3

CEMA B 5" Replacement Roll, Slotted Ends

Belt Width	Part No.	A	B	C	Wt (lb)
14	B5-TE-14-S	5	5-1/8	5-15/16	5.8
16	B5-TE-16-S	6	6-1/8	6-15/16	6.3
18	B5-TE-18-S	7	7-1/8	7-15/16	6.9
20	B5-TE-20-S	7-11/16	7-13/16	8-5/8	7.3
24	B5-TE-24-S	9	9-1/8	9-15/16	8.0
30	B5-TE-30-S	11	11-1/8	11-15/16	9.2
36	B5-TE-36-S	13	13-1/8	13-15/16	10.3



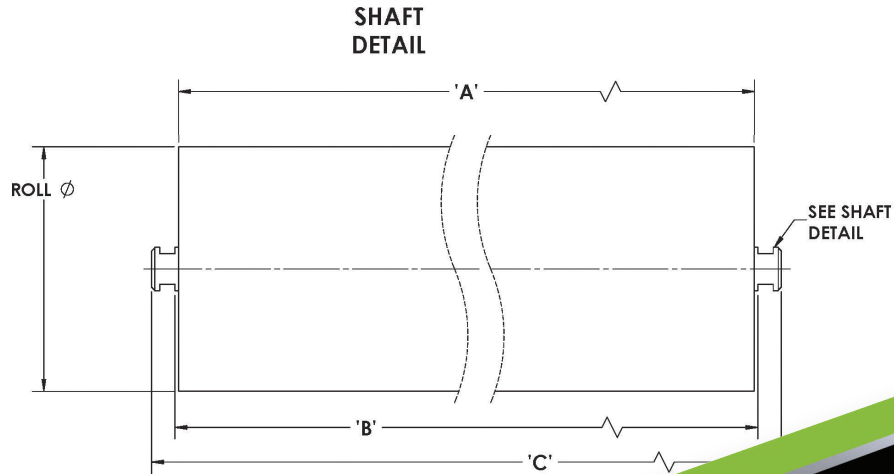
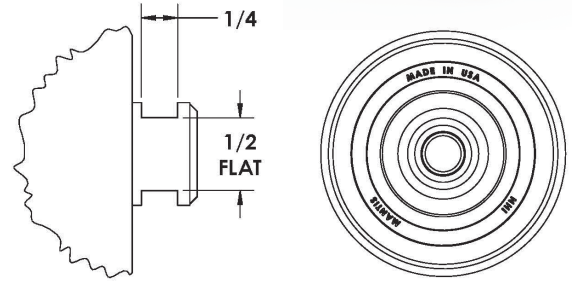
CONVEYOR PRODUCTS® by NHI



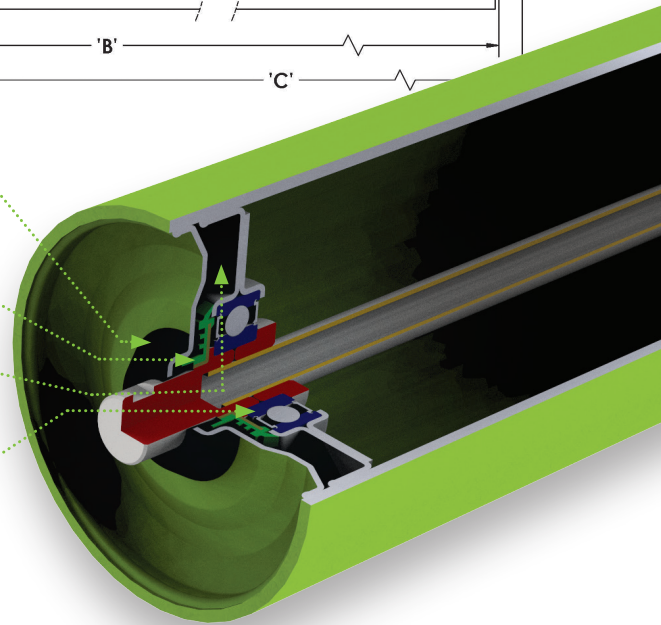
CEMA B Return Idlers

Idlers are equipped with 6204 series Ball Bearings, larger than the industry standard 6203, for increased load capacity and extended life. These larger bearings are sealed with NHI's proprietary 6204 Defender® Triple Lip Seals for enhanced contamination resistance and grease retention.

- Patented design.
- Internal edge weld—no contact with conveyor belt.
- Four layers of protection from contaminants that cause other idlers to break down.



- 1. External Nylon Labyrinth Seal** on end cap reduces possible intrusion area by up to 65% versus competitors' idlers.
- 2. Secondary Internal Labyrinth Seal** with contact lip prevents contaminants from reaching bearings.
- 3. Chamber Lock Technology** creates a separate holding area for contaminants, should any penetrate the first two layers of protection.
- 4. Proprietary Defender® Bearings** sized larger than industry standard, for improved capacity and extended life. These bearings feature a proprietary seal design for superior contaminant resistance and grease retention.



Return Part Numbering

XX-X-XXX



Require engineering support? Contact us with your ideas, plans or specs.

800.654.1090
sales@mantis-mfg.com

mantis-mfg.com

MANTIS CEMA B Return Rolls

CEMA B 4" Return Roll

Belt Width	Part No.	A	B	C	Wt (lb)
14	B4-R-14X	17-1/2	17-5/8	18-7/16	10.5
16	B4-R-16X	19-1/2	19-5/8	20-7/16	11.4
18	B4-R-18X	21-1/2	21-5/8	22-7/16	12.4
20	B4-R-20X	23-1/2	23-5/8	24-7/16	13.3
24	B4-R-24X	27-1/2	27-5/8	28-7/16	15.1
30	B4-R-30X	33-1/2	33-5/8	34-7/16	17.9
36	B4-R-36X	39-1/2	39-5/8	40-7/16	20.6

CEMA B 5" Return Roll

Belt Width	Part No.	A	B	C	Wt (lb)
14	B5-R-14X	17-1/2	17-5/8	18-7/16	13.2
16	B5-R-16X	19-1/2	19-5/8	20-7/16	14.3
18	B5-R-18X	21-1/2	21-5/8	22-7/16	15.5
20	B5-R-20X	23-1/2	23-5/8	24-7/16	16.6
24	B5-R-24X	27-1/2	27-5/8	28-7/16	18.9
30	B5-R-30X	33-1/2	33-5/8	34-7/16	22.3
36	B5-R-36X	39-1/2	39-5/8	40-7/16	25.8