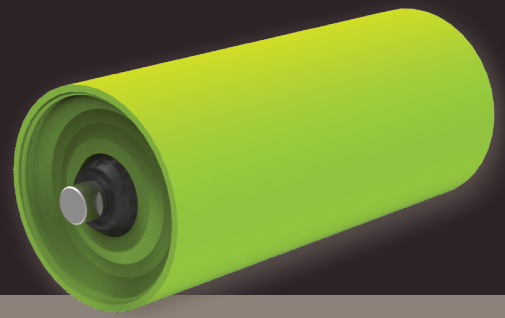




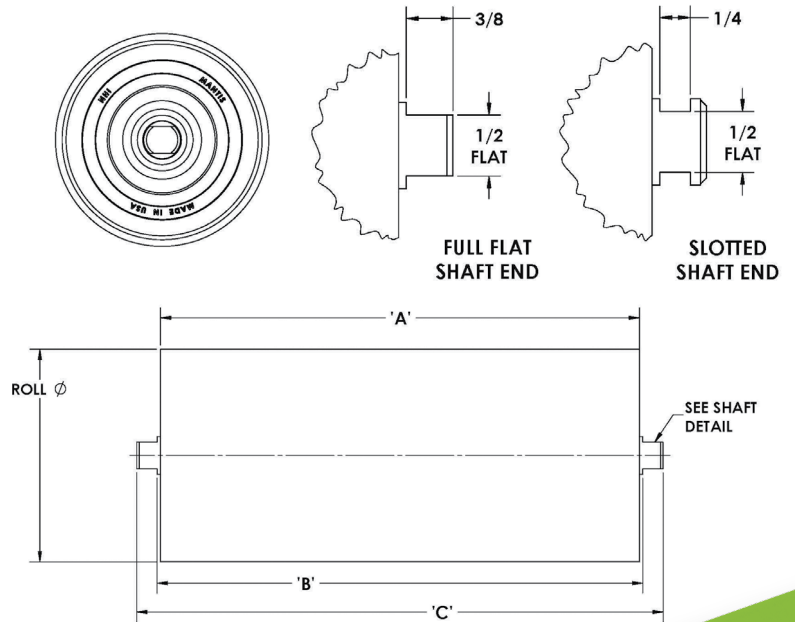
MANTIS CONVEYOR PRODUCTS®



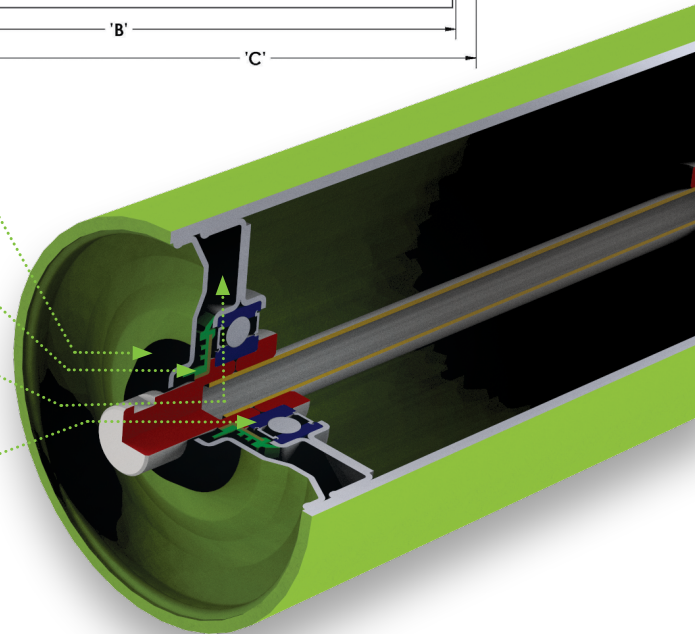
CEMA B Idlers

Idlers are equipped with 6204 series Ball Bearings, larger than the industry standard 6203, for increased load capacity and extended life. These larger bearings are sealed with NHI's proprietary 6204 Defender® Triple Lip Seals for enhanced contamination resistance and grease retention.

- Patented design.
- Internal edge weld—no contact with conveyor belt.
- Four layers of protection from contaminants that cause other idlers to break down.



- 1. External Nylon Labyrinth Seal** on end cap reduces possible intrusion area by up to 65% versus competitors' idlers.
- 2. Secondary Internal Labyrinth Seal** with contact lip prevents contaminants from reaching bearings.
- 3. Chamber Lock Technology** creates a separate holding area for contaminants, should any penetrate the first two layers of protection.
- 4. Proprietary Defender® Bearings** sized larger than industry standard, for improved capacity and extended life. These bearings feature a proprietary seal design for superior contaminant resistance and grease retention.



Idler Part Numbering **XX-XX-XX-X**

CEMA Series
B

Roll Diameter
B - 4, 5

Frame Configuration
TE - Equal Length Troughing

Shaft End
No suffix - Full flat
S - Slotted

Belt Width
B - 14-36"