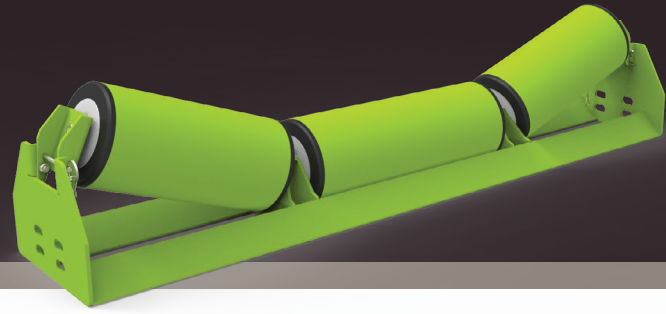




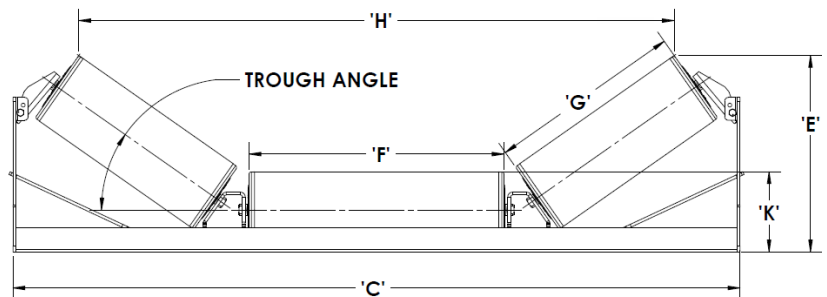
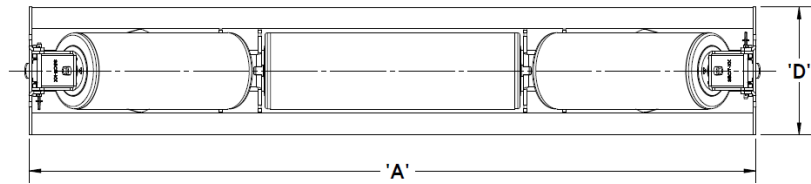
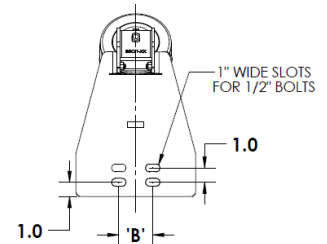
MANTIS CONVEYOR PRODUCTS®



CEMA C Channel Inset Troughing Assemblies

CEMA C Channel Inset Assemblies utilize the same tool-less roller changeover methods as our standard Mantis TRIM Series™ troughing assemblies, allowing for quick roller change when needed. All assemblies incorporate dual angles to prevent twisting under loading and ensure your conveyor will run longer and more efficiently.

- Dual angle base and hollow center braces minimize surface area beneath the rollers to prevent debris build up on frame.
- Equipped with MANTIS's Patent Pending CEMA C idlers for increased load capacity and extended life.
- Uses the same MANTIS TRIM design as the CEMA C troughing assemblies for ease of maintenance.
- Symmetrical frame design provides simpler installation over directional frames by eliminating cantilevered load issues.
- Simply Pull the Ring Pin
- Pivot the Upper Channel outward
- Pull the Wing Roller out and up
- Reverse the process to securely lock the new roller in place, simple as that.



Channel Inset Part Numbering

XX-XXXX-XX

