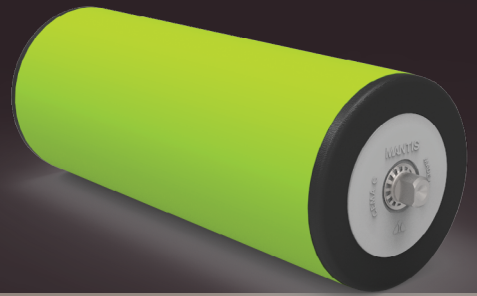




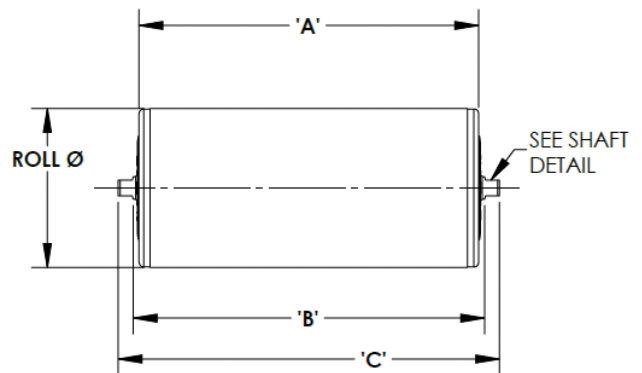
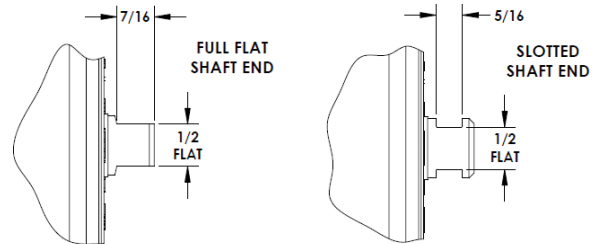
MANTIS CONVEYOR PRODUCTS®



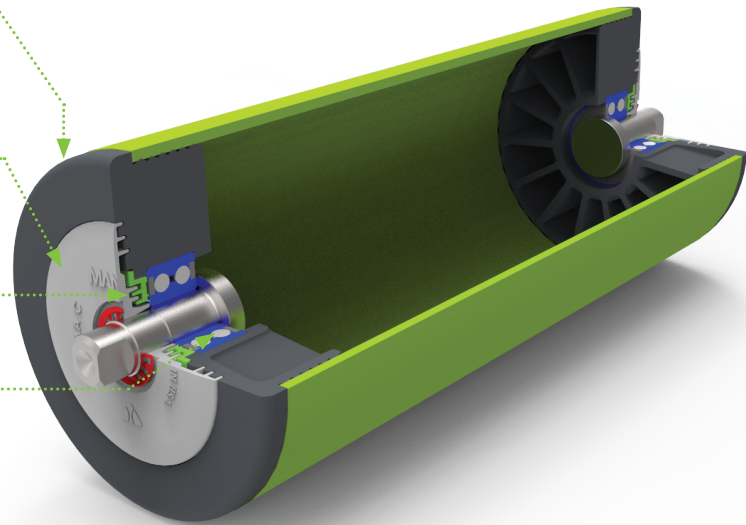
CEMA C Idlers

Idlers are equipped with heavy duty 5204 Double Row Ball Bearings, larger than the industry standard 6204, for increased load capacity and extended life. These larger bearings are sealed with NHI's proprietary Defender® Triple Lip Seals for enhanced contamination resistance, and grease retention.

- Patent Pending design.
- Steel Shell with Composite Bearing Housing for improved bearing retention and corrosion resistance



- 1. Composite Bearing Housing** provides corrosion resistance while also eliminating the co-axiality issues caused by deep drawn stamped pockets as used in many competitor products.
- 2. External Stationary End Cap** with integral labyrinth seal designed to prevent large contaminants from entering while also letting liquid debris to expel.
- 3. Secondary Internal Labyrinth Seal** with contact lip prevents contaminants from reaching bearings.
- 4. Proprietary Defender® Bearings** sized larger than industry standard, for improved capacity and extended life. These bearings feature a proprietary seal design for superior contaminant resistance and grease retention.



Part Numbering **XX-XX-XX-X**

CEMA Series
C

Roll Diameter
C - 4, 5, 6

Frame Configuration
TE - Equal Length
Troughing

Shaft End
No suffix - Full flat
S - Slotted

Belt Width
C - 18-60"