

**MANTIS**

CONVEYOR PRODUCTS®

**Conveyor Pulley Products**



## OUR MISSION

MANTIS Conveyor Products® are built to last longer than the competition for greater ROI. Designed to protect idler bearings, minimize belt damage, and reduce & reject spillover & debris under many conditions - wet, dry, long-distance, and more.

### We Engineer Solutions

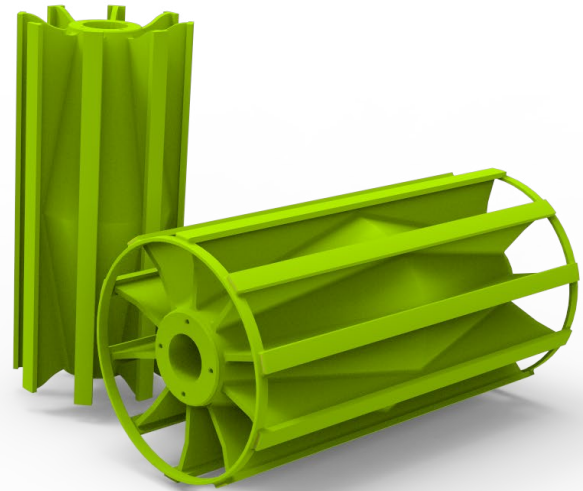
MANTIS engineering ensures more uptime for your conveyor systems. That translates to greater efficiency, and dramatic cost savings. We are makers, with more than 63 years of experience manufacturing for top OEM brands in an array of industries.

### MANTIS The future of material handling

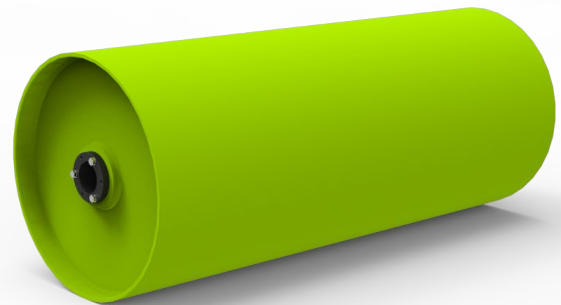
- More Uptime
- Less Maintenance
- Built to last
- CEMA Idlers
- Troughing Assemblies

# Standard Heavy Duty Pulleys

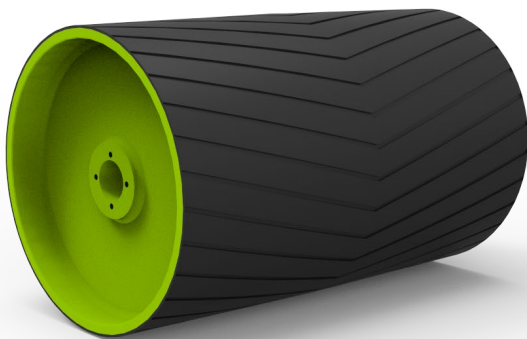
MANTIS conveyor products line of heavy duty pulleys meets CEMA Std. No. B105.1 and 501.1 specifications for 10" through 60" diameter crown face pulleys utilizing compression hubs and bushings. The rims and end discs are engineered for minimum shaft deflection of the largest shaft usable for the hub size under the allowable bearing centers for each size listed.



WING PULLEYS

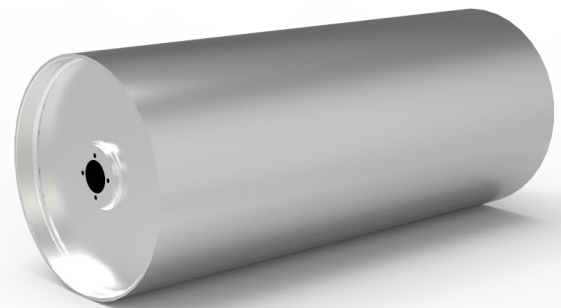


DRUM PULLEYS



Lagging

Vulcanized Lagging various durometers and thickness Replaceable slide lagging 1/4"-3/8"-1/2"-3/4" thick. Custom Lagging is also available.

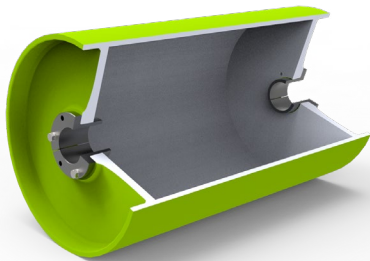


Stainless Steel

Drum and wing pulleys available in 304L and 316 Stainless material Bushing, hubs and shafting also available in stainless

# Mine Duty Pulleys

MANTIS offers all pulleys in mine duty standards as well. They are manufactured to the same tolerances and incorporate the same features as our heavy duty pulleys but are engineered for more demanding applications by utilizing heavier end discs, extra center discs, thicker rims and thicker contact bars/gussets on wings.



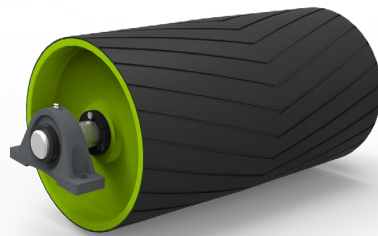
## Profiled End Disc

Profiled End Discs are available for added strength, providing extended life by eliminating the hub-to-disc weld thereby reducing stress points and allowing for more flexing.



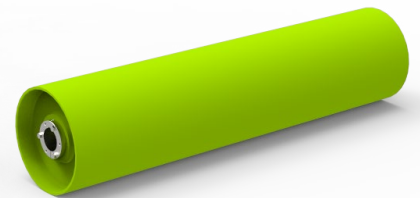
## Hubs & Bushings

Our pulleys come standard with XT and QD compression type hubs and bushings. Keyless Locking devices are also available for more engineered applications.



## Shaft Assemblies

MANTIS conveyor products can also ship complete assemblies with shafts, pillow blocks or takeups ready to install.



## Pipe Pulleys

Small, flat faced pulleys are manufactured from pipe/tubing. 4" through 8" diameter are readily available in XT or QD hubs

# Part Number Identification

## PULLEYS CDL1226XT253H

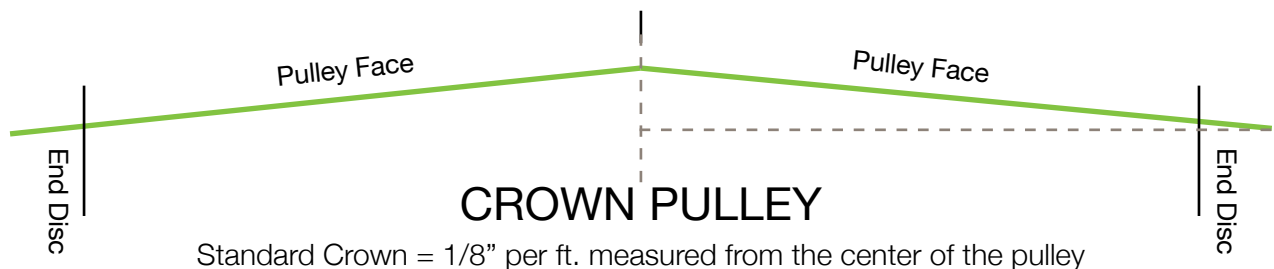
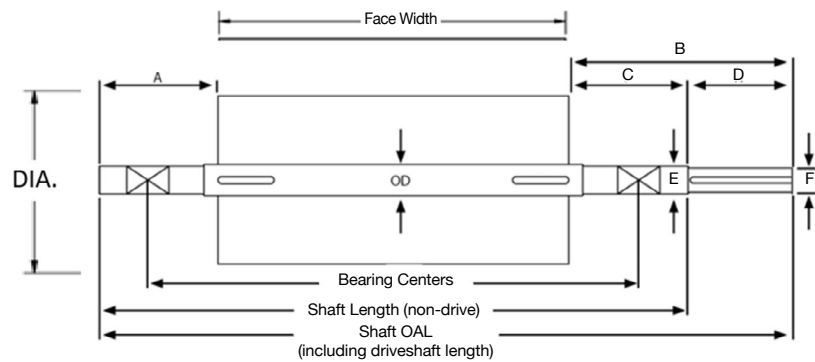
# CD 12 26 XT25 3 H

<b>Pulley Type</b>		<b>Pulley Face</b>		<b>Lagging Type</b>	
CD	Crowned Drum	4" to 63" (standard)		P	Plain
MDCD	Mine Duty Crowned Drum	<b>Pulley OD</b>	6" Minimum 60" Maximum	<b>Hub Size &amp; Type</b>	<b>Lagging Thickness</b>
CW	Crowned Wing				2=1/4"
MDW	Mine Duty Wing			3=3/8"	4=1/2"
FF	Flat Face Drum			5=5/8"	
SW	Spiral Wing				
MDSW	Mine Duty Spiral Wing				
				<b>XT</b>	<b>QD</b>
				15	SDS
				20	SK
				25	SF
				30	E
				35	F
				40	JS
				45	MS
				50	NS
				60	PS
					No suffix = Not Lagged

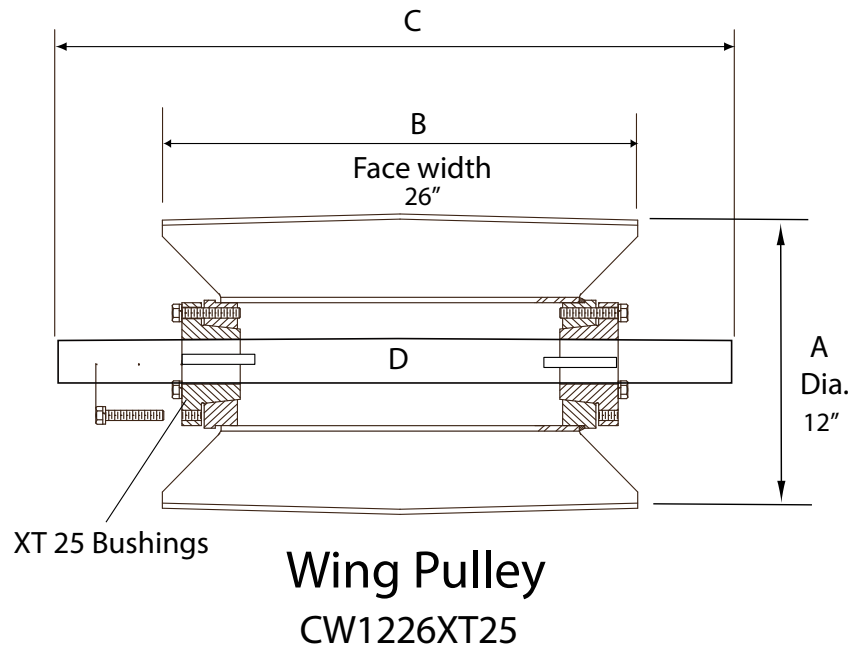
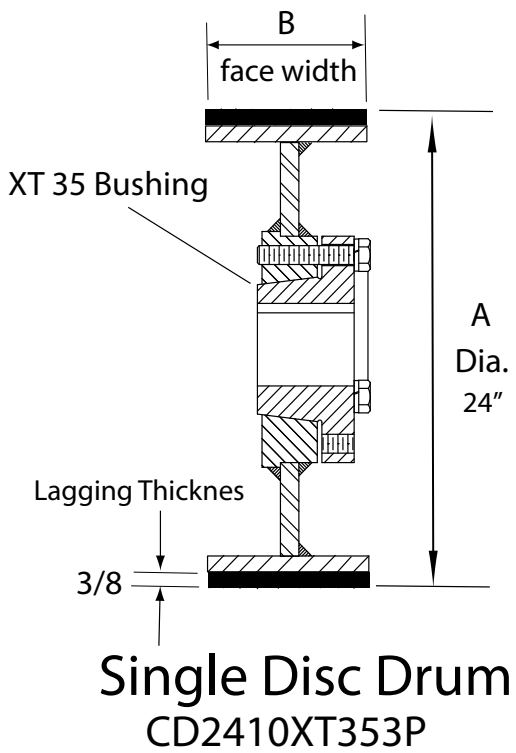
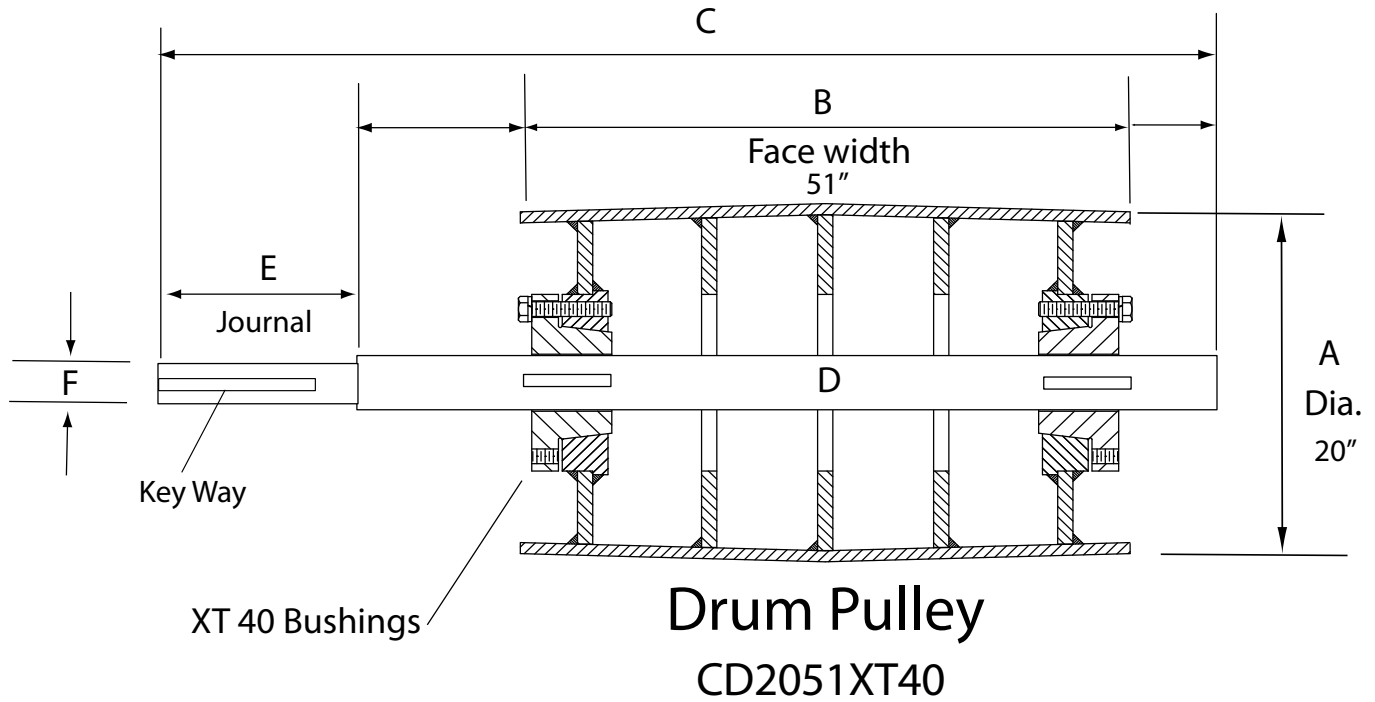
## SHAFTING SH215X64.52 KW

# SH 215 X 64.5 (2)KW

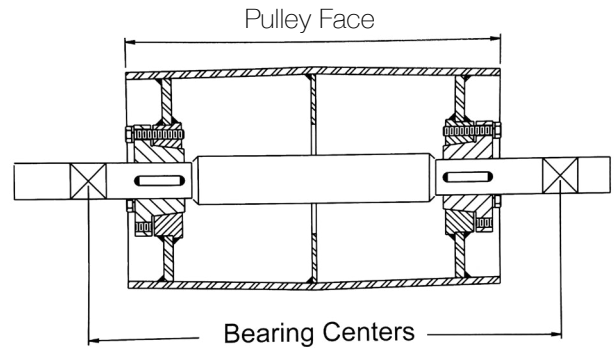
<b>SHAFT</b>			
C1045 (Standard)	Shaft Diameter in 1/16 inches	Shaft Length in inches	Keyways Required



# Part Number Identification Continued



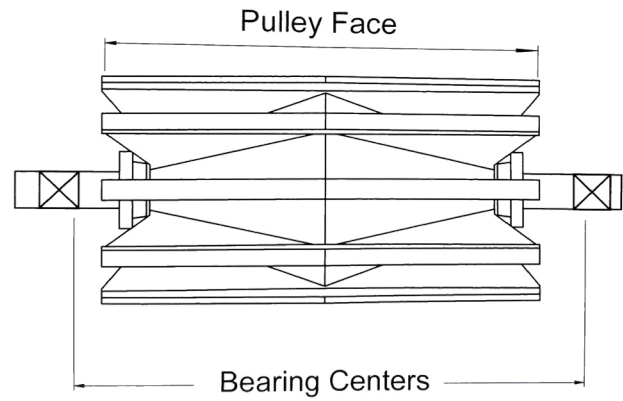
# Drum Pulley Load Ratings



## Drum Pulley Allowable Shaft Loads

Shaft Dia	Bearing Centers Minus Pulley Face (inches)	Pulley Face												
		12"	14"	16"	18"	20"	22"	26"	32"	38"	44"	51"	57"	63"
1-7/16	6	1000	1000	950	820	720	640	530	420	350	300	250	220	200
	10	700	700	600	570	500	450	370	290	240	210	180	160	140
	14	540	540	510	440	390	350	290	240	190	160	140	120	110
1-15/16	6	2500	2500	2500	2500	2400	2100	1800	1540	1100	980	840	720	670
	10	1700	1700	1700	1700	1700	1500	1200	970	800	680	580	540	470
	16	1200	1200	1200	1200	1100	1100	840	670	550	470	400	360	320
2-3/16	8	2900	2900	2900	2900	2900	2800	2300	1900	1500	1300	1100	990	890
	12	2200	2200	2200	2200	2200	2100	1700	1400	1100	970	820	730	660
	18	1500	1500	1500	1500	1500	1500	1200	980	810	690	590	530	470
2-7/16	8	4000	4000	4000	4000	4000	4000	4000	2900	2400	2000	1700	1500	1400
	12	3000	3000	3000	3000	3000	3000	3000	2100	1700	1500	1300	1100	1000
	18	2100	2100	2100	2100	2100	2100	2100	1500	1300	1100	910	810	730
2-11/16	8	5300	5300	5300	5300	5300	5300	5300	4200	3400	2900	2900	2200	2000
	12	3900	3900	3900	3900	3900	3900	3900	3100	2600	2200	1900	1600	1500
	18	2800	2800	2800	2800	2800	2800	2800	2200	1800	1600	1300	1200	1100
2-15/16	8	6900	6900	6900	6900	6900	6900	6900	6000	4900	4200	3600	3200	2900
	14	4600	4600	4600	4600	4600	4600	4600	3900	3200	2800	2300	2100	1900
	20	3400	3400	3400	3400	3400	3400	3400	2900	2400	2000	1700	1500	1400
3-7/16	10	8500	8500	8500	8500	8500	8500	8500	8500	7400	6300	5300	4700	4200
	14	6700	6700	6700	6700	6700	6700	6700	6700	5800	4900	4200	3700	3200
	20	5100	5100	5100	5100	5100	5100	5100	5100	4400	3800	3200	2800	2500
3-15/16	10	12400	12400	12400	12400	12400	12400	12400	12400	12400	10600	8900	7900	7100
	14	9800	9800	9800	9800	9800	9800	9800	9800	9800	8400	7100	6300	5600
	20	7500	7500	7500	7500	7500	7500	7500	7500	7500	6400	5400	4800	4300
4-7/16	12	15300	15300	15300	15300	15300	15300	15300	15300	15300	14800	12500	11000	9900
	16	12500	12500	12500	12500	12500	12500	12500	12500	12500	12100	10300	9100	8100
	22	9800	9800	9800	9800	9800	9800	9800	9800	9800	9500	8100	7100	6400
4-15/16	12	19900	19900	19900	19900	19900	19900	19900	19900	19900	19900	18600	16400	14600
	16	16400	16400	16400	16400	16400	16400	16400	16400	16400	16400	15400	13500	12100
	22	13000	13000	13000	13000	13000	13000	13000	13000	13000	13000	12200	10700	9600
5-7/16	14	22000	22000	22000	22000	22000	22000	22000	22000	22000	22000	22000	20700	18400
	18	18700	18700	18700	18700	18700	18700	18700	18700	18700	18700	18700	17700	15700
	24	15300	15300	15300	15300	15300	15300	15300	15300	15300	15300	15300	14500	12800
5-15/16	14	29500	29500	29500	29500	29500	29500	29500	29500	29500	29500	29500	29500	27300
	18	25100	25100	25100	25100	25100	25100	25100	25100	25100	25100	25100	25100	23300
	24	20600	20600	20600	20600	20600	20600	20600	20600	20600	20600	20600	20600	19000
6-1/2	16	33200	33200	33200	33200	33200	33200	33200	33200	33200	33200	33200	33200	33200
	20	28800	28800	28800	28800	28800	28800	28800	28800	28800	28800	28800	28800	28800
	26	24000	24000	24000	24000	24000	24000	24000	24000	24000	24000	24000	24000	24000
7	16	41400	41400	41400	41400	41400	41400	41400	41400	41400	41400	41400	41400	41400
	20	35900	35900	35900	35900	35900	35900	35900	35900	35900	35900	35900	35900	35900
	26	29900	29900	29900	29900	29900	29900	29900	29900	29900	29900	29900	29900	29900

# Wing Pulley Load Ratings



## Wing Pulley Allowable Shaft Loads

Shaft Dia	Bearing Centers Minus Pulley Face (inches)	Pulley Face													
		12"	14"	16"	18"	20"	22"	26"	32"	38"	44"	51"	57"	63"	
1-7/16	6	760	760	760	760	760	650	530	420	350	300	250	220	200	
	10	540	540	540	540	540	450	370	290	240	210	180	160	140	
	14	410	410	410	410	410	350	290	240	190	160	140	120	110	
1-15/16	6	1850	1850	1850	1850	1850	1850	1750	1390	1150	980	840	720	670	
	10	1290	1290	1290	1290	1290	1290	1230	970	800	680	580	540	470	
	16	890	890	890	890	890	890	840	670	550	470	400	360	320	
2-3/16	8	2190	2190	2190	2190	2190	2190	2190	1850	1500	130	1100	990	890	
	12	1620	1620	1620	1620	1620	1620	1620	1370	1100	970	820	730	660	
	18	1160	1160	1160	1160	1160	1160	1160	980	810	690	590	530	470	
2-7/16	8	3020	3020	3020	3020	3020	3020	3020	2860	2400	2000	1700	1500	1400	
	12	2240	2240	2240	2240	2240	2240	2240	2110	1700	1500	1300	1100	1000	
	18	1610	1610	1610	1610	1610	1610	1610	1510	1300	1100	910	810	730	
2-11/16	8	3980	3980	3980	3980	3980	3980	3980	3980	4920	4190	2500	2200	2000	
	12	2950	2950	2950	2950	2950	2950	2950	2950	3230	2750	1860	1600	1500	
	18	2540	2540	2540	2540	2540	2540	2540	2540	2540	2410	2050	1340	1200	1100
2-15/16	8	5190	5190	5190	5190	5190	5190	5190	5190	4920	4190	3600	3200	2900	
	14	3410	3410	3410	3410	3410	3410	3410	3410	3230	2750	2300	2100	1900	
	20	2450	2450	2450	2450	2450	2450	2450	2450	2410	2000	1700	1500	1400	
3-7/16	10	6380	6380	6380	6380	6380	6380	6380	6380	6380	6380	6250	5300	4960	4200
	14	5040	5040	5040	5040	5040	5040	5040	5040	5040	5040	4940	4190	3700	3320
	20	3830	3830	3830	3830	3830	3830	3830	3830	3830	3830	3750	3180	2800	2520
3-15/16	10	9280	9280	9280	9280	9280	9280	9280	9280	9280	9280	9280	8930	7890	7060
	14	7380	7380	7380	7380	7380	7380	7380	7380	7380	7380	7380	7100	6270	5620
	20	5640	5640	5640	5640	5640	5640	5640	5640	5640	5640	5640	5430	4840	4290
4-7/16	12	11470	11470	11470	11470	11470	11470	11470	11470	11470	11470	11470	11470	11060	9400
	16	9360	9360	9360	9360	9360	9360	9360	9360	9360	9360	9360	9360	9050	7690
	22	7350	7350	7350	7350	7350	7350	7350	7350	7350	7350	7350	7350	7110	6050
4-15/16	12	15530	15530	15530	15530	15530	15530	15530	15530	15530	15530	15530	15530	15530	11470
	16	12610	12610	12610	12610	12610	12610	12610	12610	12610	12610	12610	12610	12610	9360
	22	9950	9950	9950	9950	9950	9950	9950	9950	9950	9950	9950	9950	9950	7350
5-7/16	14	16470	16470	16470	16470	16470	16470	16470	16470	16470	16470	16470	16470	16470	14890
	18	14030	14030	14030	14030	14030	14030	14030	14030	14030	14030	14030	14030	14030	12250
	24	11480	11480	11480	11480	11480	11480	11480	11480	11480	11480	11480	11480	11480	9670
5-15/16	14	22130	22130	22130	22130	22130	22130	22130	22130	22130	22130	22130	22130	22130	22130
	18	21850	21850	21850	21850	21850	21850	21850	21850	21850	21850	21850	21850	21850	21850
	24	15420	15420	15420	15420	15420	15420	15420	15420	15420	15420	15420	15420	15420	15420
6-1/2	16	24890	24890	24890	24890	24890	24890	24890	24890	24890	24890	24890	24890	24890	24890
	20	21570	21570	21570	21570	21570	21570	21570	21570	21570	21570	21570	21570	21570	21570
	26	17970	17970	17970	17970	17970	17970	17970	17970	17970	17970	17970	17970	17970	17970
7	16	31080	31080	31080	31080	31080	31080	31080	31080	31080	31080	31080	31080	31080	31080
	20	26940	26940	26940	26940	26940	26940	26940	26940	26940	26940	26940	26940	26940	26940
	26	22450	22450	22450	22450	22450	22450	22450	22450	22450	22450	22450	22450	22450	22450



# BUSHINGS XT & QD

Bushing	Bore	Bushing Keyway	Shaft Keyway	*Weights
XT15	5/8 - 7/8	3/16 X 3/32	3/16 X 3/32	1.1
	15/16 - 1-1/4	1/4 X 1/8	1/4 X 1/8	1.1
	15/16 - 1-3/8	5/16 X 5/32	5/16 X 5/32	1.1
	1-7/16 - 1-1/2	3/8 X 1/8	3/8 X 3/16	1.1
XT20	3/4 - 7/8	3/16 X 3/32	3/16 X 3/32	2.1
	15/16 - 1-1/4	1/4 X 1/8	1/4 X 1/8	2.1
	1-5/16 - 1-3/8	5/16 X 5/32	5/16 X 5/32	2.1
	1-7/16 - 1-3/4	3/8 X 3/16	3/8 X 3/16	2.1
	1-13/16 - 2	1/2 X 3/16	1/2 X 1/4	2.1
XT25	1 1-1/4	1/4 X 1/8	1/4 X 1/8	3.5
	1-5/16 - 1-3/8	5/16 X 5/32	5/16 X 5/32	3.5
	1-7/16 - 1-3/4	3/8 X 3/16	3/8 X 3/16	3.5
	1-13/16 - 2-1/4	1/2 X 1/4	1/2 X 1/4	3.5
	2-5/16 - 2-1/2	5/8 X 1/8	5/8 X 5/16	3.5
	2-7/8 - 3	3/4 X 3/16	3/4 X 3/8	6.2
XT30	1-7/16 - 1-3/4	3/8 X 3/16	3/8 X 3/16	6.2
	1-13/16 - 2-1/4	1/2 X 1/4	1/2 X 1/4	6.2
	2-5/16 - 2-3/4	5/8 X 5/16	5/8 X 5/16	6.2
	2-13/16	3/4 X 3/8	3/4 X 3/8	6.2
	2-7/8 - 3	3/4 X 3/16	3/4 X 3/8	6.2
XT35	1-15/16 - 2-1/4	1/2 X 1/4	1/2 X 1/4	10.4
	2-5/16 - 2-3/4	5/8 X 5/16	5/8 X 5/16	10.4
	2-13/16 - 3-1/4	3/4 X 3/8	3/4 X 3/8	10.4
	3-5/16 - 3-3/8	7/8 X 7/16	7/8 X 7/16	10.4
	3-7/16 - 3-1/2	7/8 X 5/16	7/8 X 7/16	10.4
XT40	2-7/16 - 2-3/4	5/8 X 5/16	5/8 X 5/16	13.3
	2-13/16 - 3-1/4	3/4 X 3/8	3/4 X 3/8	13.3
	3-5/16 - 3-3/4	7/8 X 7/16	7/8 X 7/16	13.3
	3-13/16	1 X 1/2	1 X 1/2	13.3
	3-7/8 - 4	1 X 3/8	1 X 1/2	13.3
XT45	3-7/16 - 3-3/4	7/8 X 7/16	7/8 X 7/16	18.5
	3-13/16 - 4-5/16	1 X 1/2	1 X 1/2	18.5
	4-3/8 - 4-1/2	1 X 3/8	1 X 1/2	18.5
XT50	3-15/16 - 4-1/2	1 X 1/2	1 X 1/2	35.5
	4-9/16 - 5	1-1/4 X 5/8	1-1/4 X 5/8	35.5
XT60	4-15/16 - 5-1/2	1-1/4 X 5/8	1-1/4 X 5/8	48
	5-9/16 - 6	1-1/2 X 3/4	1-1/2 X 3/4	48
XT70	5-5/16 - 5-1/2	1-1/4 X 5/8	1-1/4 X 5/8	74.6
	5-9/16 - 6-1/2	1-1/2 X 3/4	1-1/2 X 3/4	74.6
	6-9/16 - 7	1-3/4 X 3/4	1-3/4 X 3/4	74.6
XT80	6-15/16 - 7-1/2	1-3/4 X 3/4	1-3/4 X 3/4	96.6
	7-9/16 - 8	2 X 3/4	2 X 3/4	96.6
XT100	8-1/2 - 9	2 X 3/4	2 X 3/4	146
	9-7/16, 9-1/2, 10	2-1/2 X 7/8	2-1/2 X 7/8	146

Bushing	Bore	Bushing Keyway	Shaft Keyway	*Weights
SF	1/2 - 9/16	1/8 X 1/16	1/8 X 1/16	4
	5/8 - 7/8	3/16 X 3/32	3/16 X 3/32	4
	15/16 - 1-1/4	1/4 X 1/8	1/4 X 1/8	4
	1-5/16 - 1-3/8	5/16 X 5/32	5/16 X 5/32	4
	1-7/16 - 1-3/4	3/8 X 3/16	3/8 X 3/16	4
	1-13/16 - 2-1/4	1/2 X 1/4	1/2 X 1/4	4
	2-5/16	5/8 X 5/16	5/8 X 5/16	4
	2-3/8 - 2-1/2	5/8 X 3/16	5/8 X 5/16	4
	2-7/8 - 3	3/4 X 3/8	3/4 X 3/8	4
E	1 1-3/8	5/16 X 5/32	5/16 X 5/32	8.7
	1-7/16 - 1-3/4	3/8 X 3/16	3/8 X 3/16	8.7
	1-13/16 - 2-1/4	1/2 X 1/4	1/2 X 1/4	8.7
	2-5/16 - 2-3/4	5/8 X 5/16	5/8 X 5/16	8.7
	2-13/16 - 2-7/8	3/4 X 3/8	3/4 X 3/8	8.7
	2-15/16	3/4 X 1/8	3/4 X 3/8	8.7
F	1-13/16 - 2-1/4	1/2 X 1/4	1/2 X 1/4	13
	2-5/16 - 2-3/4	5/8 X 5/16	5/8 X 5/16	13
	2-13/16 - 3-1/4	3/4 X 3/8	3/4 X 3/8	13
	3-5/16 - 3-7/16	7/8 X 3/16	7/8 X 7/16	13
JS	2-13/16 - 3-1/4	3/4 X 3/8	3/4 X 3/8	17.8
	3-5/16 - 3-3/4	7/8 X 7/16	7/8 X 7/16	17.8
	3-13/16	1 X 1/8	1 X 1/2	17.8
MS	3-7/8 - 4	1 X 1/8	1 X 1/2	17.8
	2-13/16 - 3-1/4	3/4 X 3/8	3/4 X 3/8	44.2
	3-5/16 - 3-3/4	7/8 X 7/16	7/8 X 7/16	44.2
NS	3-13/16 - 4-9/16	1 X 1/2	1 X 1/2	44.2
	4-11/16 - 4-3/4	1-1/4 X 5/8	1-1/4 X 5/8	44.2
	3-5/16 - 3-3/4	7/8 X 7/16	7/8 X 7/16	52.7
	3-13/16 - 4-1/2	1 X 1/2	1 X 1/2	52.7
PS	4-3/4 - 5-1/2	1-1/4 X 5/8	1-1/4 X 5/8	52.7
	3-15/16 - 4-1/2	1 X 1/2	1 X 1/2	84.1
	4-3/4 - 5-1/2	1-1/4 X 5/8	1-1/4 X 5/8	84.1
WS	5-15/16	1-1/2 X 3/4	1-1/2 X 3/4	84.1
	5-3/4 - 6-1/2	1-1/2 X 3/4	1-1/2 X 3/4	183
	7 - 7-1/2	1-3/4 X 3/4	1-3/4 X 3/4	183
	8	2 X 1/4	2 X 3/4	183

# Pulley Set Backs for Drum Pulleys XT & QD Bushings



TABLE 3.1 XT BUSHING LOCATION DIMENSIONS

Hub	Dimensions			Bushing	Max Bore	Screw Torque (ft-lbs)
	A	B	C			
XT15	5/32	1-1/8	13/16	XT15	1-1/2	8
XT20	7/16	1-13/32	1-1/8	XT20	2	17
XT25	1/2	1 7/8	1-9/16	XT25	2-1/2	30
XT30	1/2	2-1/16	1-3/8	XT30	3	45
XT35	9/16	2-15/32	1-9/16	XT35	3-1/2	70
XT40	5/8	2-13/16	1-13/16	XT40	4	100
XT45	11/16	3-5/16	2	XT45	4-1/2	140
XT50	13/16	3-3/4	2-1/4	XT50	5	250
XT60	7/8	4-1/8	2-1/4	XT60	6	400
XT70	1	4-11/16	2-3/4	XT70	7	600
XT80	1-1/8	5-1/8	3-3/16	XT80	8	750
XT100	1-1/8	6-3/16	3-3/4	XT100	10	750
XT120	1-1/8	7-1/16	3-3/4	XT120	12	750

TABLE 3.3 TAPER-LOCK BUSHING LOCATION DIMENSIONS

Hub	Dimensions			Bushing	Max Bore	Screw Torque (ft-lbs)
	A	B	C			
K25	3/4	1-3/4	7/8	2517	2-1/2	36
F25	3/4	1-3/4	7/8	2517	2-1/2	36
F30	3/4	2	1-5/16	3020	3	67
K35	3/4	3-1/2	1-15/16	3535	3-1/12	84
K40	3/4	4	2-5/8	4040	4	142
K45	3/4	4-1/2	3-5/16	4545	4-1/2	205
K50	3/4	5	4-1/16	5050	5	259
K60	2	5	2-3/8	6050	6	-
K70	2	6	2-3/8	7060	7	-
K80	2	6-1/2	2-3/8	8065	8	-
K100	2	8-1/2	3-3/8	10085	10	-

TABLE 3.2 QD BUSHING LOCATION DIMENSIONS

Hub	Dimensions			Bushing	Max Bore	Screw Torque (ft-lbs)
	A	B	C			
QDSF	5/8	2-1/16	1-5/8	SF	2-1/2	30
QDE	5/8	2-3/4	1-7/8	DE	2-15/16	60
QDF	1/2	3-3/4	3-5/16	F	3-7/16	76
QDJS	3/4	4-5/8	2-3/16	JS	4	135
QDMS	2-7/16	6-3/4	1-7/8	MS	4-3/4	225
QDNS	1-7/8	8-1/8	3-3/16	NS	5-1/4	300
QDPS	2-7/16	9-3/8	3-3/16	PS	6-1/4	450
QDWS	2-9/16	11-3/8	3-3/4	WS	8-1/8	600
QDSS	1-5/8	8-3/4	4-1/16	SS	10	750

TABLE 3.4 SXT BUSHING LOCATION DIMENSIONS

Hub	Dimensions			Bushing	Max Bore	Screw Torque (ft-lbs)
	A	B	C			
SXT25	1/16	3-1/2	2	XT25	2-1/2	30
SXT30	1/8	3-9/16	1-3/4	XT30	3	45
SXT35	1/4	3-25/32	1-7/8	X1T35	3-1/2	70
SXT40	3/8	3-13/16	2-1/16	XT40	4	100
SXT45	9/16	3-15/16	2-1/8	XT45	4-1/2	140
SXT50	13/16	4	2-1/4	XT50	5	250
SXT60	15/16	4-1/8	2-3/16	XT60	6	400

# Pulley Set Backs for Wing Pulleys XT & QD Bushings

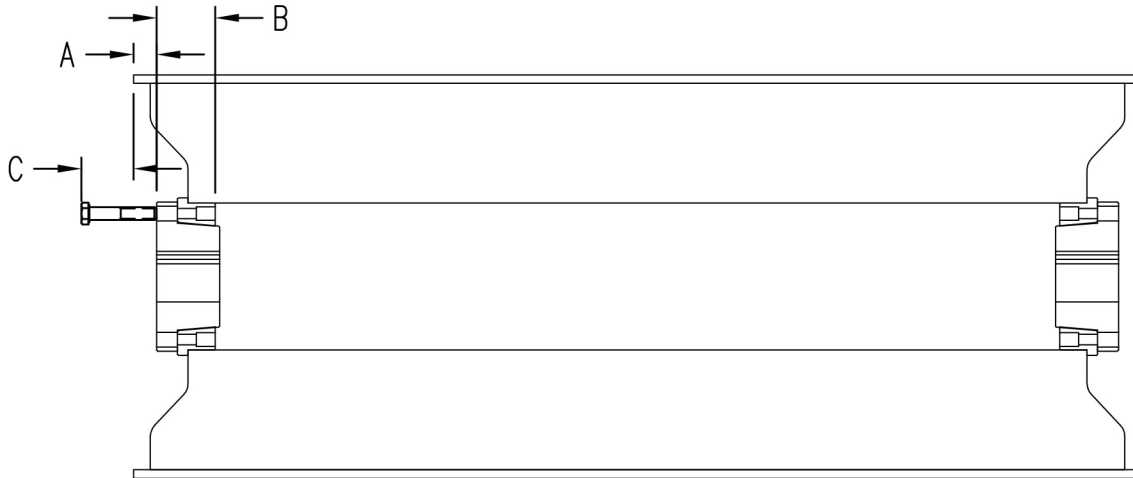


TABLE 3.5 XT BUSHING LOCATION DIMENSIONS

Hub	Dimensions			Bushing	Max Bore	Screw Torque (ft-lbs)
	A	B	C			
XT15	5/32	1-1/8	13/16	XT15	1-1/2	8
XT20	7/16	1-13/32	1-1/8	XT20	2	17
XT25	1/2	1-7/8	1-9/16	XT25	2-1/2	30
XT30	1/2	2-1/16	1-3/8	XT30	3	45
XT35	9/16	2-15/32	1-9/16	XT35	3-1/2	70
XT40	5/8	2-13/16	1-13/16	XT40	4	100
XT45	11/16	3-5/16	2	XT45	4-1/2	140
XT50	13/16	3-3/4	2-1/4	XT50	5	250
XT60	7/8	4-1/8	2-1/4	XT60	6	400
XT70	1	4-11/16	2-3/4	XT70	7	600
XT80	1-1/8	5-1/8	3-3/16	XT80	8	750
XT100	1-1/8	6-3/16	3-3/4	XT100	10	750
XT120	1-1/8	7-1/16	3-3/4	XT120	12	750

TABLE 3.6 QD BUSHING LOCATION DIMENSIONS

Hub	Dimensions			Bushing	Max Bore	Screw Torque (ft-lbs)
	A	B	C			
QDSF	5/8	2-1/16	1-5/8	SF	2-1/2	30
QDE	5/8	2-3/4	1-7/8	E	2-15/16	60
QDF	1/2	3-3/4	3-5/16	F	3-7/16	76
QDJS	3/4	4-5/8	2-3/16	JS	4	135
QDMS	2-7/16	6-3/4	1-7/8	MS	4-3/4	225
QDNS	1-7/8	8-1/8	3-3/16	NS	5-1/4	300
QDPS	2-7/16	9-3/8	3-3/16	PS	6-1/4	450
QDWS	2-9/16	11-3/8	3-3/4	WS	8-1/8	600
QDSS	1-5/8	8-3/4	4-1/16	SS	10	750

TABLE 3.8 SXT BUSHING LOCATION DIMENSIONS

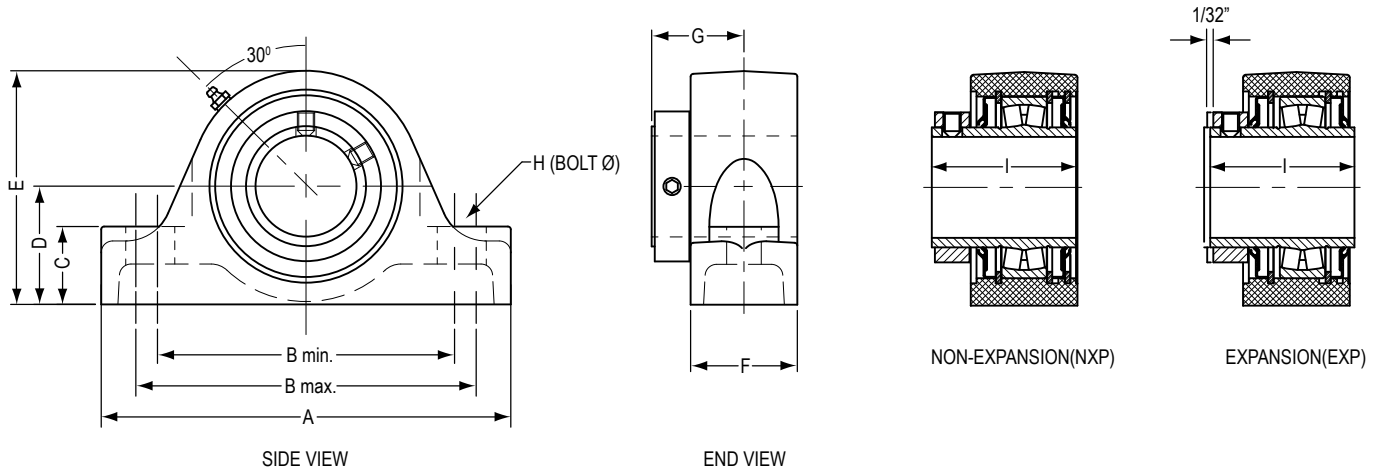
Hub	Dimensions			Bushing	Max Bore	Screw Torque (ft-lbs)
	A	B	C			
SXT25	1/16	3-1/2	2	XT25	2-1/2	30
SXT30	1/8	3-9/16	1-3/4	XT30	3	45
SXT35	1/4	3-25/32	1-7/8	XT35	3-1/2	70
SXT40	3/8	3-13/16	2-1/16	XT40	4	100
SXT45	9/16	3-15/16	2-1/8	XT45	4-1/2	140
SXT50	13/16	4	2-1/4	XT50	5	250
SXT60	15/16	4-1/8	2-3/16	XT60	6	400

TABLE 3.7 TAPER-LOCK BUSHING LOCATION DIMENSIONS

Hub	Dimensions			Bushing	Max Bore	Screw Torque (ft-lbs)
	A	B	C			
W16	1-5/8	1-1/2	1/8	1615	2-1/2	36
W25	1-1/2	1-3/4	9/16	2517	2-1/2	36
K30	1-3/4	2	7/8	3020	3	67
K35	2-3/4	3-1/2	5/8	3535	3-1/2	84
K40	2-3/4	4	1-3/8	4040	4	142
K45	2-5/8	4-1/2	2	4545	4-1/2	205
K50	3-3/8	5	1-5/8	5050	5	259

# Pillow Blocks(2-Bolt) MA-2000

- Fully self-aligning
- Fixed and expansion units
- Cast iron housing

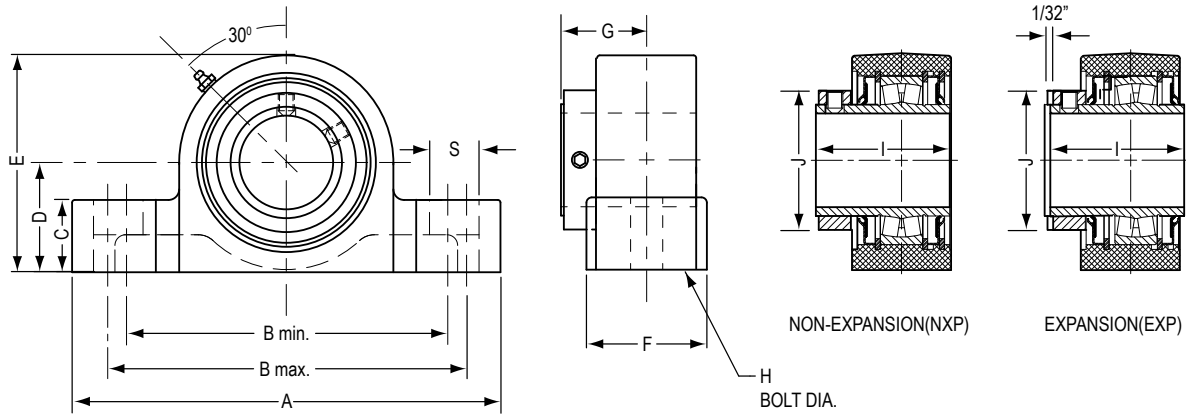


SHAFT DIA.	ASSEMBLY DESIGNATION	WEIGHT LBS.	A	B		C	D	E	F	G	H bolt Ø	I
				MIN	MAX							
1-7/16	MA2107	6.5	6-7/8	4-11/16	5-5/16	1-3/16	1-7/8	3-7/8	2-1/8	1-3/4	1/2	2-3/4
1-1/2	MA2108	6.5		5-3/16	5-13/16	1-5/16	2-1/8	4-1/4	2-1/8	1-7/8	1/2	2-7/8
1-11/16	MA2111	8.5	7-3/8	5-15/16	6-9/16	1-3/8	2-1/4	4-5/8	2-3/8	1-7/8	5/8	2-7/8
1-3/4	MA2112	8.0		6-7/16	7-1/16	1-5/8	2-1/2	5	2-3/8	2	5/8	3-1/8
1-15/16	MA2115	10.5	8-3/8	7-13/16	8-7/16	2-1/4	3-1/4	6-7/16	2-5/8	2-3/8	3/4	3-5/8
2	MA2200	10.0		9-1/4	7-7/16	1-3/4	2-3/4	5-11/16	2-5/8	2-1/8	5/8	3-3/8
2-3/16	MA2203	12.0	9-1/4	9-1/4	10-3/4	2-1/4	3-3/4	7-1/2	3	2-5/8	7/8	4-1/32
2-7/16	MA2207	18.0		10-1/2	11-3/4	2-1/2	4-1/8	8-7/16	3-3/8	3	1	4-19/32
2-1/2	MA2208	17.0	10-1/2	10	11-3/4	2-1/2	4-1/8	8-7/16	3-3/8	3	1	4-19/32
2-11/16	MA2211	24.0		13	9-1/4	10-3/4	2-1/4	3-3/4	7-1/2	3	2-5/8	7/8
2-3/4	MA2212	24.0	13	9-1/4	10-3/4	2-1/4	3-3/4	7-1/2	3	2-5/8	7/8	4-1/32
2-15/16	MA2215	22.0		10-3/4	11-3/4	2-1/2	4-1/8	8-7/16	3-3/8	3	1	4-19/32
3	MA2300	22.0	13	9-1/4	10-3/4	2-1/4	3-3/4	7-1/2	3	2-5/8	7/8	4-1/32
3-7/16	MA2307	34.0		10-3/4	11-3/4	2-1/2	4-1/8	8-7/16	3-3/8	3	1	4-19/32
3-1/2	MA2308	33.8	14-1/4	10	11-3/4	2-1/2	4-1/8	8-7/16	3-3/8	3	1	4-19/32
3-11/16	MA2311	49.8		11-3/4	11-3/4	2-1/2	4-1/8	8-7/16	3-3/8	3	1	4-19/32
3-15/16	MA2315	48.0	14-1/4	10	11-3/4	2-1/2	4-1/8	8-7/16	3-3/8	3	1	4-19/32
4	MA2400	48.0		11-3/4	11-3/4	2-1/2	4-1/8	8-7/16	3-3/8	3	1	4-19/32

NOTE: For expansion unit specify EXP. All units come as standard with triple guard seal.

# Pillow Blocks(2-Bolt) ME-2000

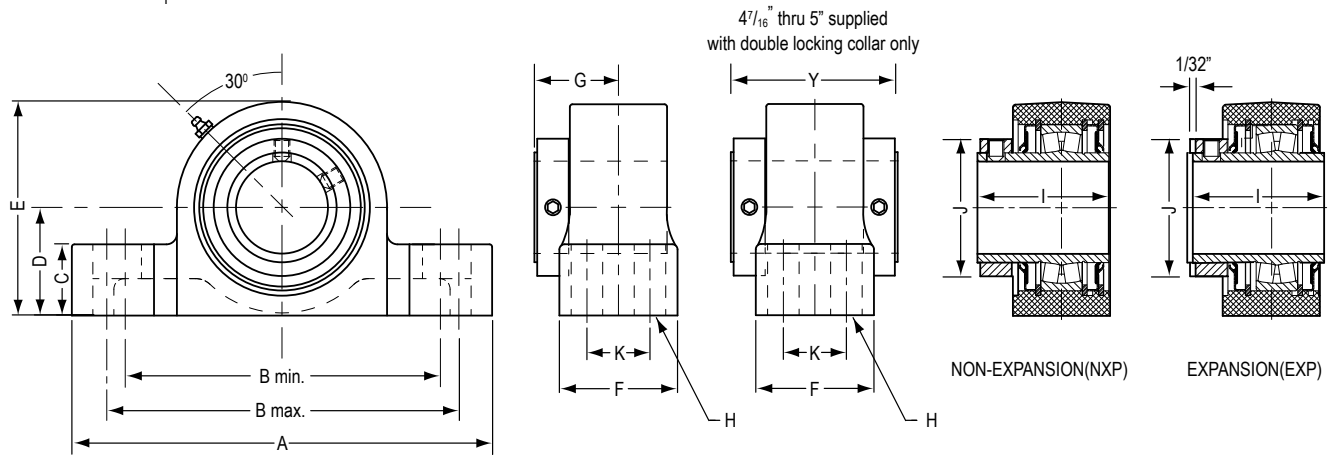
- Fully self-aligning
- Fixed and expansion units



SHAFT DIA.	ASSEMBLY DESIGNATION	WEIGHT LBS.	A	B		C	D	E	F	G	H bolt 0	I	J	S
				MIN	MAX									
1-3/8	ME2106	8.4	7-3/8	5-1/2	6	1-1/8	1-7/8	3-7/8	2-1/8	1-3/4	1/2	2-3/4	2-3/8	3/4
1-7/16	MEP2107	8.0												
1 -1/2	ME2108	9.8	7-7/8	6-1/8	6-3/8	1-1/4	2-1/8	4-1/4	2-3/8	1-7/8	1/2	2-7/8	2-5/8	3/4
1-5/8	ME2110	9.6												
1-1/16	ME2111	9.3												
1-3/4	ME2112	9.3	8-7/8	6-3/4	7-1/4	1-5/16	2-1/4	4-1/2	2-1/2	1-7/8	5/8	2-7/8	2-7/8	7/8
17-8	ME2114	10.7												
1-15/16	ME2115	10.5												
2	ME2200	10.5												
2-3/16	ME2203	13.5	9-5/8	7-1/2	8	1-1/2	2-1/2	5	2-5/8	2	5/8	3-1/8	3-1/4	7/8
2-1/4	ME2204	18.7	10-1/2	8-1/4	8-3/4	1-3/8	2-3/4	5-11/16	2-7/8	2-1/8	5/8	3-3/8	4	7/8
2-7/16	ME2207	18.5												
2-1/2	ME2208	18.5												
2-11/16	ME2211	26.5	12	9-1/4	9-3/4	1-7/8	3-1/8	6-5/16	3	2-3/8	3/4	3-5/8	4-1/2	1
2-3/4	ME2212	25.5												
2-15/16	ME2215	22.5												
3	ME2300	22.5												
3-3/16	ME2303	36.2	14	10-11/16	11-5/8	2-1/4	3-3/4	7-1/2	3-5/8	2-7/8	7/8	4-1/32	5-1/8	1-3/16
3-1/4	ME2304	36.0												
3-7/16	ME2307	35.5												
3-1/2	ME2308	35.5												

# Pillow Blocks(4-Bolt) ME-2000

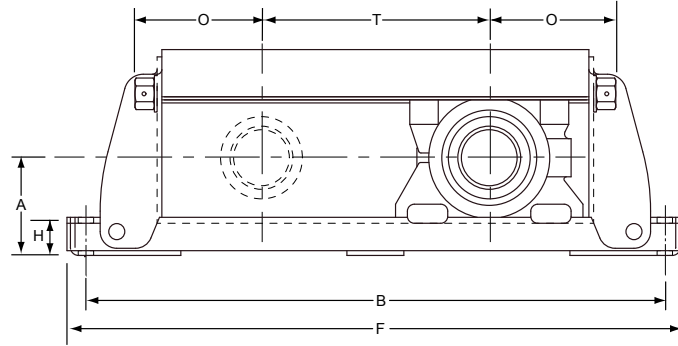
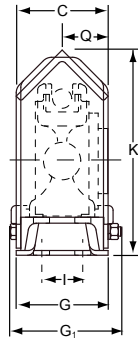
- Fully self-aligning
- Fixed and expansion units



SHAFT DIA.	ASSEMBLY DESIGNATION	WEIGHT LBS.	A	B		C	D	E	F	G	H bolt 0	I	J	K	Y	
				MIN	MAX											
2-1/4	ME2204F	19.3														
2-7/16	ME2207F	19.0	10-1/2	8-1/4	8-3/4	1-5/8	2-3/4	5-1/6	3-1/2	2-7/8	5/8	3-3/8	4-1/16	1-7/8	—	
2-1/2	ME2208F	19.0														
2-11/16	ME2211F	28.1														
2-3/4	ME2212F	28.1	12	9-1/8	9-7/8	1-7/8	3-1/8	6-5/16	4	2-3/8	5/8	3-5/8	4-23/32	2-1/8	—	
2-15/16	ME2215F	28.0														
3	ME2300F	28.0														
3-3/16	ME2303F	38.0														
3-1/4	ME2304F	38.0	14	10-9/16	11-7/16	2-1/4	3-3/4	7-1/2	4-1/2	2-5/8	3/4	4-1/32	5-17/32	2-3/8	—	
3-7/16	ME2307F	38.0														
3-1/2	ME2308F	37.6														
3-11/16	ME2311F	55.0														
3-5/16	ME2315F	55.0	15-1/4	12	13	2-7/16	4-1/4	8-9/16	4-1/2	3	3/4	4-19/32	6	2-1/4	—	
4	ME2400F	53.0														
4-7/16	ME5407F	75.0	16-5/8	13-1/8	13-7/8	2-3/4	4-3/4	9-3/8	4-5/8	3-1/16	3/4	6-1/8	6-7/16	2-1/2	6-1/8	
4-1/2	ME5408F	75.0														
4-15/16	ME5415F	106.0	18-1/2	15-1/8	15-7/8	3	5-1/2	10-7/8	5-1/8	3-5/16	7/8	6-7/8	7-7/16	2-7/8	6-5/8	
5	ME5500F	106.0														
5-7/16	ME5507F	230.0														
5-5/16	ME5515F	250.0	22	17-3/8	19-1/8	3-1/4	6-11/16	13-3/16	6-1/4	4-1/2	1	9	9-3/8	3-3/4	—	
6	ME5600F	245.0														
6-7/16	ME5607F	356.0														
6-2	ME5608F	350.0														
6-15/16	ME5615F	340.0	26	21-1/4	23-1/4	3-11/16	7-1/2	14-15/16	7-1/8	5-1/4	1	10-1/2	11-3/8	4-5/8	—	
7	ME5700F	335.0														

# Protected Screw Takeup Assembly MNT-2000

- 2000 Series roller bearing
- Normal duty rating
- Welded steel frame

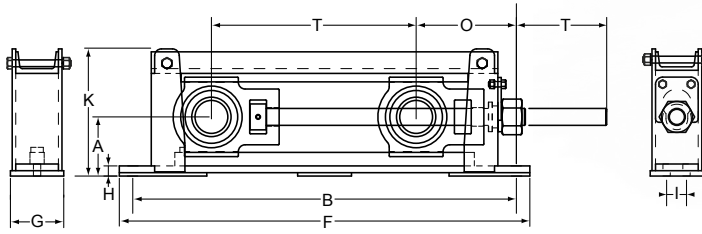


SHAFT SIZE	COMPLETE ASSY. NUMBER	COMPLETE ASSY. WT.	FRAME ASSY. NUMBER	FRAME ASSY. WT.	ALLOWABLE WORKING LOAD*	A	B	C	F	G	G1	H	I	K	TRAVEL T	O	Q	REQ. BOLTS	
																		NO.	SIZE
1-15/16 2	MNT6-2115 MNT6-2200	12	44	CN6	12	29	3-15/16	26-1/2	28-1/2	3-1/2	4-1/8	1-3/4	—	8-1/4	12	7-1/4	1-7/8	2	5/8
		18	49		18	34		32-1/2	34-1/2						18				
		24	55		24	40		38-1/2	40-1/2						24				
		30	60		30	45		44-1/2	46-1/2						30				
		36	65		36	50		50-1/2	52-1/2						36				
2-3/16	MNT7-2203	12	52	CN7	12	35	4-3/16	27-1/2	29-1/2	3-1/2	4-1/8	1-3/4	—	8-11/16	12	7-3/4	2	2	5/8
		18	58		18	41		33-1/2	35-1/2						18				
		24	64		24	47		39-1/2	41-1/2						24				
		30	71		30	54		45-1/2	47-1/2						30				
		36	76		36	59		51-1/2	53-1/2						36				
2-7/16 2-1/2	MNT8-2207 MNT8-2208	12	84	CN8	12	62	4-3/8	28-1/2	30-1/2	3-1/2	4-1/8	1-3/4	—	9-1/4	12	8-1/4	2-1/8	2	3/4
		18	89		18	67		34-1/2	36-1/2						18				
		24	94		24	72		40-1/2	42-1/2						24				
		30	99		30	78		46-1/2	48-1/2						30				
		36	104		36	82		52-1/2	54-1/2						36				
2-11/16 2-15/16 3	MNT9-2211 MNT9-2215 MNT9-2300	12	99	CN9	12	69	5-1/8	30-1/2	32-1/2	4-1/2	5-1/8	2	2	10-13/16	12	9-1/4	2-3/8	4	3/4
		18	107		18	77		36-1/2	38-1/2						18				
		24	115		24	85		42-1/2	44-1/2						24				
		30	123		30	93		48-1/2	50-1/2						30				
		36	131		36	101		54-1/2	56-1/2						36				
3-7/16 3-1/2	MNT10-2307 MNT10-2308	12	114	CN10	12	70	5-5/8	32	34-1/4	4-1/2	5-5/8	2	2	12-7/16	12	10	21-9/32	4	3/4
		18	122		18	78		38	40-1/4						18				
		24	130		24	86		44	46-1/4						24				
		30	138		30	94		50	52-1/4						30				
		36	146		36	102		56	58-1/4						36				
3-11/16 3-15/16 4	MNT11-2311 MNT11-2315 MNT11-2400	12	227	CN11	12	130	7	36	38-1/2	5-1/2	6-7/8	2-1/4	2-1/2	14-1/8	12	12	23-1/32	4	3/4
		18	238		18	141		42	44-1/2						18				
		24	250		24	153		48	50-1/2						24				
		30	261		30	164		54	56-1/2						30				
		36	273		36	176		60	62-1/2						36				

# Heavy Duty Center-Pull Takeup Assembly

## MHT-2000 / MHT-5000

- Self-aligning roller bearing
- Metric sizes available
- Welded steel frame



SHAFT DIA.	COMPLETE ASSY. NUMBER	COMPLETE ASSY. WT.	FRAME ASSY. ONLY	FRAME NET WT.	ALLOWABLE WORKING LOAD+	A	B	F	G	H	I	K	TRAVEL T	O	BOLTS REQ.	
															NO.	SIZE
1-15/16 2	MHT6-2115 MHT6-2200	-12	73	CHT6-12	58	3-15/16	27-1/2	29-1/2	4	7/8	-	83/16	15-1/2	6-3/8	2	5/8
		-18	84	CHT6-18	69		33-1/2	35-1/2			-		21-1/2			
		-24	95	CHT6-24	80		39-1/2	41-1/2			-		27-1/2			
		-30	106	CHT6-30	91		45-1/2	47-1/2			-		33-1/2			
		-36	117	CHT6-36	102		51-1/2	53-1/2			-		39-1/2			
2-3/16	MHT7-2203	-12	85	CHT7-12	67	4-7/16	27-1/2	29-1/2	4	13/16	-	9	15	6-3/4	2	5/8
		-18	96	CHT7-18	78		33-1/2	35-1/2			-		21			
		-24	108	CHT7-24	90		39-1/2	41-1/2			-		27			
		-30	119	CHT7-30	101		45-1/2	47-1/2			-		33			
		-36	130	CHT7-36	112		51-1/2	53-1/2			-		39			
2-7/16 2-1/2	MHT8-2207 MHT8-2208	-12	98	CHT8-12	74	4-3/8	28-1/2	30-1/2	4	3/4	-	93/16	15	7-1/2	2	3/4
		-18	110	CHT8-18	86		34-1/2	36-1/2			-		21			
		-24	122	CHT8-24	98		40-1/2	42-1/2			-		27			
		-30	134	CHT8-30	110		46-1/2	48-1/2			-		33			
		-36	146	CHT8-36	122		52-1/2	54-1/2			-		39			
2-11/16 2-15/16 3	MHT9-2211 MHT9-2215 MHT9-2300	-12	145	CHT9-12	115	5-1/8	30-1/2	32-1/2	5	11/8	2	1078	16	8-1/8	4	5/8
		-18	161	CHT9-18	131		36-1/2	38-1/2			-		22			
		-24	175	CHT9-24	145		42-1/2	44-1/2			-		28			
		-30	195	CHT9-30	165		48-1/2	50-1/2			-		34			
		-36	202	CHT9-36	182		54-1/2	56-1/2			-		40			
3-7/16 3-1/2	MHT10-2307 MHT10-2308	-12	161	CHT10-12	126	5-5/8	32	34-1/4	5	1-1/8	2	11-13/16	16	8-3/4	4	3/4
		-18	180	CHT10-18	145		38	40-1/4			-		22			
		-24	199	CHT10-24	164		44	46-1/4			-		28			
		-30	218	CHT10-30	183		50	52-1/4			-		34			
		-36	237	CHT10-36	202		56	58-1/4			-		40			
3-11/16 3-15/16 4	MHT11-2311 MHT11-2315 MHT11-2400	-12	244	CHT11-12	195	7	36	38-1/2	6	13/8	2-1/2	14-3/8	17-1/2	10-5/8	4	3/4
		-18	276	CHT11-18	227		42	44-1/2			-		23-1/2			
		-24	302	CHT11-24	253		48	50-1/2			-		28-1/2			
		-30	327	CHT11-30	278		54	56-1/2			-		35-1/2			
		-36	353	CHT11-36	304		60	62-1/2			-		40-1/2			
4-7/16 4-1/2	MHT12-5407 MHT12-5408	-12	363	CHT12-12	279	7-1/2	40-3/4	45-3/4	8-7/8	13/8	5	15-1/2	19	12-1/4	4	1-1/8
		-18	391	CHT12-18	307		46-3/4	51-3/4			-		25			
		-24	418	CHT12-24	334		52-3/4	57-3/4			-		31			
		-30	447	CHT12-30	363		58-3/4	63-3/4			-		37			
		-36	468	CHT12-36	384		64-1/4	69-3/4			-		43			
4-15/16 5	MHT13-5415 MHT13-5500	-42	504	CHT12-42	420	8-1/8	70-3/4	75-3/4	9-7/8	1	5-1/2	16-3/4	49	13-1/2	4	1-1/8
		-12	440	CHT13-12	310		44-1/2	49-1/2			-		20-1/4			
		-18	460	CHT13-18	330		50-1/2	55-1/2			-		26-1/4			
		-24	496	CHT13-24	365		56-1/2	61-1/2			-		32-1/4			
		-30	527	CHT13-30	397		62-1/2	67-1/2			-		38-1/4			
5-7/16	MHT14-5507	-36	555	CHT13-36	425	10-3/16	68-1/2	73-1/2	9-7/8	1	5-1/2	16-3/4	44-1/4	13-1/2	4	1-1/8
		-42	587	CHT13-42	457		74-1/2	79-1/2			-		50-1/4			
		-18	1293	CHT14-18	876		55	61			-		18			
		-30	1420	CHT14-30	1003		67	73			-		30			
		-42	1547	CHT14-42	1130		79	85			-		42			
5-15/16 6	MHT15-5515 MHT15-5600	-18	1300	CHT15-18	878	10-9/16	55	61	12	1-1/2	7	22-1/2	18	23-1/2	4	1-3/4
		-30	1427	CHT15-30	995		67	73			-		30			
		-42	1547	CHT15-42	1121		79	85			-		42			
6-7/16 6-15/16 7	MHT16-5607 MHT16-5615 MHT16-6700	-18	1304	CHT16-18	876	10-9/16	55	61	12	1-1/2	7	22-1/2	18	23-1/2	4	1-3/4
		-30	1431	CHT16-30	1003		67	73			-		30			
		-42	1558	CHT16-42	1130		79	85			-		42			





## **MOVEMENT REDESIGNED.**

MANTIS Conveyor Products® are built to last longer than the competition for greater ROI. Designed to protect idler bearings, minimize belt damage, and reduce & reject spillover & debris under many conditions - wet, dry, long-distance, and more.

## **PROVEN PERFORMANCE.**

USA-designed and manufactured, and engineered for each application, our MANTIS system CEMA rated conveyor parts, including idlers and troughing assemblies, undergo rigorous testing and are built to outperform the competition. By far.



## **WE ENGINEER SOLUTIONS.**

MANTIS engineering ensures more uptime for your conveyor systems. That translates to greater efficiency, and dramatic cost savings. We are makers, with more than 60 years of experience manufacturing for top OEM brands in an array of industries.

**Contact our Expert Team Today!**  
**[sales@mantis-mfg.com](mailto:sales@mantis-mfg.com)**  
**800.654.1090**



# MANTIS

CONVEYOR PRODUCTS®

[mantis-mfg.com](http://mantis-mfg.com)

[sales@mantis-mfg.com](mailto:sales@mantis-mfg.com) ■ 800.654.1090

35 Connecticut Riverbend Place  
Claremont, NH 03743

